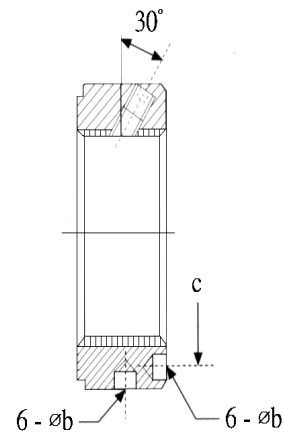
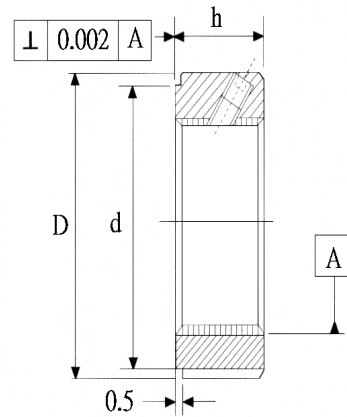
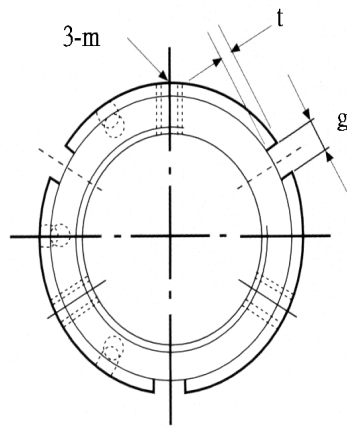


SUF 牙腹鎖定



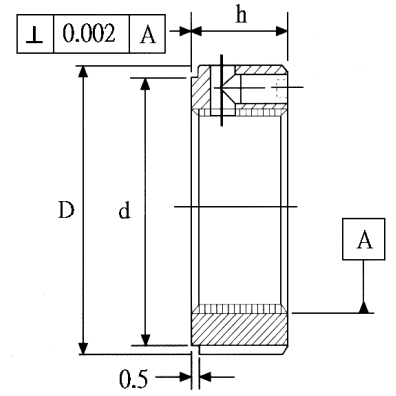
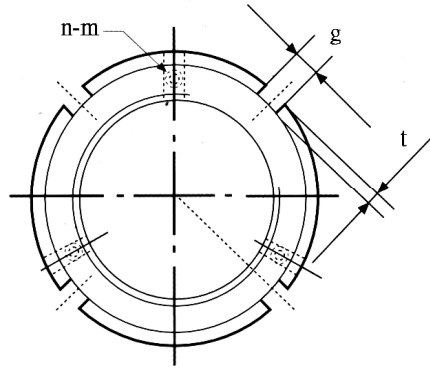
鎖定方式為螺紋半角 30°角，三點式鎖定：本產品為標準產品，其優異的鎖定設計，能使固定銅上之螺紋，完全契合於公螺紋上，減少了因為鎖緊螺絲因而產生的力矩。(此力矩如果超過軸向負荷)

材質：SCM4 調值 硬度：HRC28°-32° 螺紋精度：ISO 一級精密研磨 平面最大偏擺：0.002mm

Thread	D	h	d	g/b	t/c		m	Nm(MAX)
M17x1	32	16	27	4 / -	2	-	M5	4.5
M20x1	38	16	33	4 /	2	-	M5	4.5
M20x1.5	38	16	33	4 /	2	-	M6	8
M25x1.5	38	18	33	5 / -	2	-	M6	8
M30x1.5	45	18	40	5 /	2	-	M6	8
M35x1.5	52	18	47	5 /	2	-	M8	18
M40x1.5	58	20	52	6 / -	2.5	-	M8	18
M45x1.5	65	20	59	6 / -	2.5	-	M8	18
M50x1.5	70	20	64	6 / -	2.5	-	M8	18
M55x2	75	22	68	7 / Ø6	2.5	65	M8	18
M60x2	80	22	73	7 / Ø6	2.5	70	M8	18
M65x2	85	22	78	7 / Ø6	2.5	75	M8	18
M70x2	92	24	84	8 / Ø7	3	81	M8	18
M75x2	98	24	90	8 / Ø7	3	87	M8	18
M80x2	105	24	96	8 / Ø7	3	93	M8	18
M85x2	110	24	102	8 / Ø7	3	98	M8	18
M90x2	120	26	108	10 / Ø7	3	105	M8	18
M95x2	125	26	113	10 / Ø7	3	110	M8	18
M100x2	130	26	118	10 / Ø7	3	115	M8	18
M105x2	140	28	125	10 / Ø7	3	123	M10	35
M110x2	145	28	132	10 / Ø7	3	128	M10	35
M115x2	150	28	137	10 / Ø7	3	133	M10	35
M120x2	155	30	142	12 / Ø7	3	138	M10	35
M125x2	160	30	147	12 / Ø7	3	143	M10	35
M130x2	165	30	152	12 / Ø7	3	148	M10	35
M135x2	175	32	160	12 / Ø7	3.5	155	M10	35
M140x2	180	32	165	12 / Ø7	3.5	160	M10	35
M145x2	190	32	175	12 / Ø7	3.5	168	M10	35
M150x2	195	32	180	12 / Ø7	3.5	173	M10	35
M155x3	200	34	180	14 / Ø8	3.5	178	M10	35
M160x3	210	34	190	14 / Ø8	3.5	185	M10	35
M165x3	210	34	190	14 / Ø8	3.5	188	M10	35
M170x3	220	34	200	14 / Ø8	3.5	195	M10	35
M180x3	230	36	205	16 / Ø8	3.5	205	M12	60
M190x3	240	36	215	16 / Ø8	3.5	215	M12	60
M200x3	250	38	225	16 / Ø8	3.5	225	M12	60

註：1Nm=10.2kgf.cm

SUA 軸向鎖定



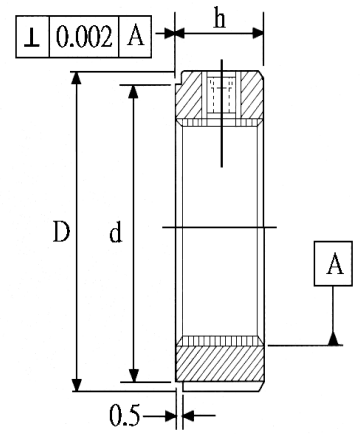
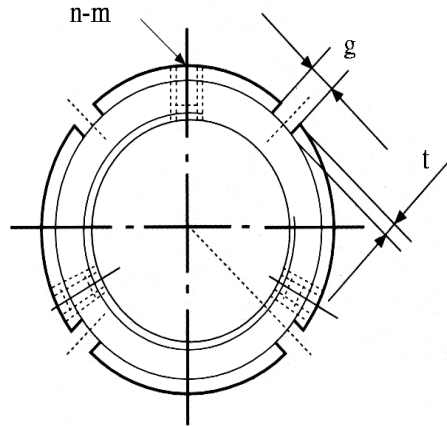
鎖定方式為軸向三點式鎖定 其厚度與 SUF 系列相同，軸向三點式鎖定為其特點，適用於裝配工作的特殊環境限制。

材質：SCM4 調值 硬度：HRC28°-32° 螺紋精度：ISO 一級精密研磨 平面最大偏擺：0.002mm

Thread	D	h	g	t	d	n - m	Nm(MAX)
M17x1	32	16	4	2	27	2 - M4	3.5
M20x1	38	16	4	2	33	3 - M4	4.5
M20x1.5	38	16	4	2	33	3 - M4	4.5
M25x1.5	38	18	5	2	33	3 - M4	4.5
M30x1.5	45	18	5	2	40	3 - M4	4.5
M35x1.5	52	18	5	2	47	3 - M6	8
M40x1.5	58	20	6	2.5	52	3 - M6	8
M45x1.5	65	20	6	2.5	59	3 - M6	8
M50x1.5	70	20	6	2.5	64	3 - M6	8
M55x2	75	22	7	3	68	3 - M6	8
M60x2	80	22	7	3	73	3 - M6	8
M65x2	85	22	7	3	78	3 - M6	8
M70x2	92	24	8	3.5	84	3 - M8	18
M75x2	98	24	8	3.5	90	3 - M8	18
M80x2	105	24	8	3.5	96	3 - M8	18
M85x2	110	24	8	3.5	102	3 - M8	18
M90x2	120	26	10	4	108	3 - M8	18
M95x2	125	26	10	4	113	3 - M8	18
M100x2	130	26	10	4	118	3 - M8	18
M105x2	140	28	12	5	125	3 - M10	35
M110x2	145	28	12	5	132	3 - M10	35
M115x2	150	28	12	5	137	3 - M10	35
M120x2	155	30	12	5	142	3 - M10	35
M125x2	160	30	12	5	147	3 - M10	35
M130x2	165	30	12	5	152	3 - M10	35
M135x2	175	32	14	6	160	3 - M12	35
M140x2	180	32	14	6	165	3 - M12	35
M145x2	190	32	14	6	175	3 - M12	35
M150x2	195	32	14	6	180	3 - M12	35
M155x3	200	34	16	7	180	3 - M12	35
M160x3	210	34	16	7	190	3 - M12	35
M165x3	210	34	16	7	190	3 - M12	35
M170x3	220	34	16	7	200	3 - M12	35
M180x3	230	36	18	8	205	3 - M12	60
M190x3	240	36	18	8	215	3 - M12	60
M200x3	250	38	18	8	225	3 - M12	60

註：1Nm=10.2kgf-cm

SUR 徑向鎖定



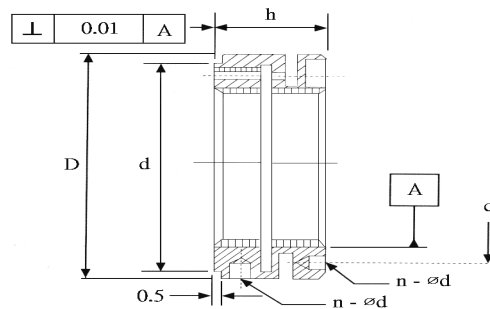
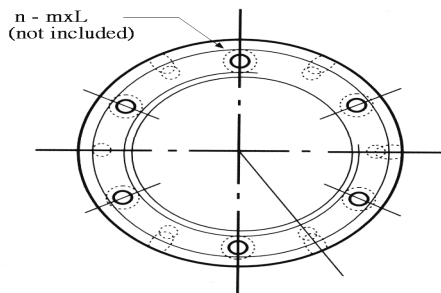
鎖定方式為徑向三點式鎖定，其厚度相較其他產品為薄，適用於螺帽厚度空間受到限制，無法使用其他產品之情況。

材質：SCM4 調值 硬度：HRC28°-32° 螺紋精度：ISO 一級精密研磨 平面最大偏擺：0.002mm

Thread	D	h	g	t	d	n - m	Nm(MAX)
M8x0.75	16	8	3	2	11	2 - M4	3.5
M10x0.75	18	8	3	2	13	2 - M4	3.5
M12x1	20	8	3	2	16	2 - M4	3.5
M15x1	25	8	3	2	21	2 - M4	3.5
M17x1	28	10	4	2	23	2 - M5	8
M20x1	32	10	4	2	27	2 - M5	8
M20x1.5	32	10	4	2	27	2 - M5	8
M25x1.5	38	12	5	2	33	3 - M6	8
M30x1.5	45	12	5	2	40	3 - M6	8
M35x1.5	52	12	5	2	47	3 - M6	8
M40x1.5	58	14	6	2.5	52	3 - M6	8
M45x1.5	65	14	6	2.5	59	3 - M6	8
M50x1.5	70	14	6	2.5	64	3 - M6	8
M55x2	75	16	7	3	68	3 - M8	8
M60x2	80	16	7	3	73	3 - M8	8
M65x2	85	16	7	3	78	3 - M8	8
M70x2	92	18	8	3.5	84	3 - M8	18
M75x2	98	18	8	3.5	90	3 - M8	18
M80x2	105	18	8	3.5	96	3 - M8	18
M85x2	110	18	8	3.5	102	3 - M8	18
M90x2	120	20	10	4	108	3 - M8	18
M95x2	125	20	10	4	113	3 - M8	18
M100x2	130	20	10	4	118	3 - M8	18
M105x2	140	22	12	5	125	3 - M8	18
M110x2	145	22	12	5	132	3 - M8	18
M115x2	150	22	12	5	137	3 - M8	18
M120x2	155	24	12	5	142	3 - M8	18
M125x2	160	24	12	5	147	3 - M8	18
M130x2	165	24	12	5	152	3 - M8	18
M135x2	175	26	14	6	160	3 - M10	35
M140x2	180	26	14	6	165	3 - M10	35
M145x2	190	26	14	6	175	3 - M10	35
M150x2	195	26	14	6	180	3 - M10	35
M155x3	200	28	16	7	180	3 - M10	35
M160x3	210	28	16	7	190	3 - M10	35
M165x3	210	28	16	7	190	3 - M10	35
M170x3	220	28	16	7	200	3 - M10	35
M180x3	230	30	18	8	205	3 - M12	60
M190x3	240	30	18	8	215	3 - M12	60
M200x3	250	32	18	8	225	3 - M12	60

註：1Nm=10.2kgf-cm

SUK 縮緊鎖定



鎖定方式為利用鋼材本身的彈性，以軸向鎖固，強制鎖定。本產品特別針對，工作環境惡劣、螺帽易於鬆脫的場合，其鎖定能力為傳統螺帽3倍以上，為其特異優點，SUK 設計的鎖定方式，因為裝配上的誤差，故無法確保平面與螺紋的垂直偏擺為其缺點。

材質：SCM4 調值 硬度：HRC26°-30° 螺紋精度：ISO 二級精密車削 平面最大偏擺：0.01mm

Thread	D	h	d	n - mxl	b	c	Part NO.
M20x1	40	18	35	4 - M4x12	4	30	20
M20x1.5	40	18	35	4 - M4x12	4	30	20
M25x1.5	45	20	40	4 - M4x12	5	35	25
M30x1.5	48	20	45	4 - M4x12	5	39	30
M35x1.5	53	22	50	4 - M4x12	5	44	35
M40x1.5	58	22	55	4 - M4x12	5	49	40
M45x1.5	68	22	63	6 - M4x16	6	57	45
M50x1.5	70	25	66	6 - M4x18	6	60	50
M55x2	75	25	71	6 - M4x18	6	65	55
M60x2	84	26	79	6 - M5x20	6	72	60
M65x2	88	28	84	6 - M5x20	6	77	65
M70x2	95	28	89	6 - M5x20	7	82	70
M75x2	100	28	94	6 - M5x20	7	87	75
M80x2	110	32	103	6 - M6x22	8	95	80
M85x2	115	32	108	6 - M6x22	8	100	85
M90x2	120	32	113	6 - M6x22	8	105	90
M95x2	125	32	118	6 - M6x22	8	110	95
M100x2	130	32	123	6 - M6x22	8	115	100
M110x2	140	32	133	6 - M6x22	8	125	110
M120x2	155	36	146	6 - M4x25	8	136	120

註：1Nm=10.2kgf-cm

精密螺帽特點及規範

安裝主軸軸承，滾珠螺桿或止推軸承，通常都因為傳統的鎖定螺帽，其螺紋的精確度，或平面的偏擺量過大，因而造成機械本身的精度、壽命以及裝配上的困擾，此產品精密螺帽系列針對機械設計要求，配合完美的機械設計。

螺牙 Thread	軸向負載能力 Axial Load static KN	扭緊力矩 Tightening Torque Nm(max)	鬆脫力矩 Loosening Torque Nm			
			SUF	SUA	SUR	SUK
M8	30	4.5	-	-	17.6	-
M10	35	4.5	-	-	18.1	-
M12	40	4.5	-	-	19.1	-
M15	60	4.5	-	-	20.6	-
M17	80	8	27.5	24.5	21.6	-
M20	90	8	28.9	26	24	99
M25	130	8	30.4	27.5	26.5	101
M30	160	8	32.4	29.4	28.4	102
M35	190	18	39.2	37.3	34.3	109.8
M40	210	18	46.1	42.2	36.3	110.8
M45	240	18	61.8	58.8	56.9	127.5
M50	300	18	70.6	65.7	63.7	137.3
M55	340	18	88.2	73.5	68.6	166.7
M60	380	18	98	81.4	96.1	205.9
M65	460	18	127.5	88.2	112.7	254.9
M70	490	18	147.1	96.1	137.3	313.7
M75	520	18	152	102.9	145.1	382.4
M80	620	18	156.9	112.7	149	460.8
M85	650	18	176.5	127.5	168.6	549
M90	680	18	186.3	137.3	178.4	656.9
M95	710	18	201	152	193.1	745.1
M100	740	18	220.6	171.6	210.8	833.3
M105	770	35	236.3	186.3	215.7	-
M110	800	35	252	205.9	230.4	1127.5
M115	830	35	268.1	220.6	250	-
M120	860	35	279.4	235.3	264.7	1323.5
M125	890	35	289.2	250	274.5	-
M130	920	35	313.7	264.7	294.1	-
M135	950	35	352.9	303.9	328.4	-
M140	980	35	392.2	323.5	372.5	-
M145	1010	35	436.3	352.9	402	-
M150	1040	35	480.4	392.2	421.6	-
M155	1070	35	519.6	421.6	460.8	-
M160	1100	35	563.7	460.8	509.8	-
M165	1130	35	598	495.1	529.4	-
M170	1160	35	647.1	519.6	558.8	-
M180	1220	60	686.3	558.8	558.2	-
M190	1280	60	735.3	598	627.5	-
M200	1340	60	794.1	637.3	666.7	-